



EUROPEAN JUDO UNION

EUROPEAN CLUB CHAMPIONSHIPS

EUROPA LEAGUE 2017

Women & Men

Wuppertal - Germany

November 25th 2017: Men

November 26th 2017: Women



COMPETITION RULES



WORDS OF WELCOME



Sergey Soloveychik
President
European Judo Union

Dear Judo Fans and Practitioners,

Team events have always provided drama, excitement and the opportunity for judo to show its incredible capacity for the spectacular. In Europe we have a long history of staging such events, team club judo championships have become really popular and develop a lot, the EJU is very proud of the number of clubs that are willing to compete at European championship level.

I wish the very best of luck to all clubs, athletes participating in the European Club Championships “Europa League”. May they qualify for the “Golden League” edition of the European Club Championships in order to compete at the highest level, becoming the best European club team.

Many of Europe’s individual champions have shown their skills and character at our team events and we look forward to watching the intensity that this highest level of competition generates. It is also a perfect opportunity for our individual stars to shine in a team environment.

The club championships tradition in Germany is very deep and strong, so I am sure that the German Judo Federation will do their best in order fans, judoka and media could bring the best memories from their time in Wuppertal.



Peter Frese
President
German Judo Federation

Dear Judo Friends,

the German Judo federation is proud to host the European Club Championships 2017. An amazing sports event will be taking place in the wonderful city of Wuppertal. Famous for the Wuppertal Suspension Railway, the city has much more to offer.

But first of all, we would like to invite you to an exciting competition. Athletes, coaches and spectators can look forward to perfectly organized European Club Championships 2017.

And if there is some time left, you can explore the city and their attractions.

1. PROGRAM

Local time	PROGRAM	Place
Thursday, November 23rd		
all day	Arrival of delegations (optional)	Official Hotels
Friday, November 24th		
all day	Arrival of delegations	Official Hotels
10:00 - 17:00	Accreditation, Organizer Financials, Media Accreditation	Hotel Intercity
18:30 - 19:00	Unofficial weigh-in Men	Hotel Intercity
19:00 - 19:30	Official weigh-in by teams Men	Hotel Intercity
20:00	Draw	Hotel Intercity
after the draw	Meeting of the referees	Hotel Intercity
Saturday, November 25th - Men		
10:00	Elimination rounds, Repechage	Sportshall
16:00	Opening Ceremony	Sportshall
16:30	Medal Contests	Sportshall
After	Awarding Ceremony	Sportshall
18:30 - 19:00	Unofficial weigh-in Women	Hotel Intercity
19:00 - 19:30	Official weigh-in by teams Women	Hotel Intercity
Sunday, November 26th -Women		
10:00	Elimination rounds, Repechage	Sportshall
15:00	Medal Contests	Sportshall
After	Awarding Ceremony	Sportshall

Attention: The program is provisional. The schedule of the contests may be modified according to the total number of entries.

2. COMPETITION PLACE

Uni-Halle Wuppertal

Address: Albert-Einstein-Straße 20, 42119 Wuppertal



3. ORGANISER

German Judo Federation

Address: Otto Fleck Schneise 12 ; 60528 Frankfurt

Email: djb@judobund.de

Tel: +49 69 6772080

Emergency contacts:

Mr. Reinhard Nimz	+49 170 4574193	(Organisation manager)
Mrs. Julia Fritsch	+49 176 66646762	(Accommodation)
Mr. Patrick Schweitzer	+49 174 1701900	(Transport)



4. PARTICIPATION

The European Club Championships 2017 are organised as a Two Levels Competition System, consisting of:

1. European Club Championships - Golden League (ECC-GL)
2. European Club Championships - Europa League (ECC-EL)

4.1 Number of teams (quotas)

- Participation: maximum quota of four (4) teams placing among the top eight (8) in the National Club Championships of the running year (if completed before entry deadline for teams) or previous year. The teams will be nominated by NF.
- Teams descending from ECC-Golden League 2016 are eligible for place in a quota and their NFs are obliged to include them in a quota of four (4) teams provided they apply for participation in ECC-Europa League 2017 and compete in National Club Championships 2017.
- An additional quota place (wild card) for both men and women teams can be awarded to the ECC - Europa League organising club in case it had not qualified from National Club Championships.

4.2 General conditions for participation

The EJU Member Federations which hold an official National Championships for clubs (minimum one-day event or League for Clubs) may enter the teams which have placed among the top eight at the 2016 Club Championships or at the 2017 Club Championships (if completed before **24th September 2017**). Upon request of EJU, National Federations are obliged to send the results of the National Club Championships with full list of participating clubs to the EJU Head Office in electronic form.

4.3 Athletes

Age

Athletes must be minimum 15 years (Born in 2002 and before)

General conditions and club membership

In order to participate in the ECC 2017, a judoka must be a registered member of the club during the current Season (2017) and at the Nominal Entry deadline **16th Oct. 2017**, according to the rules of the National Federation the club is representing.

The clubs are obliged to sign binding agreement with each athlete to represent the club in ECC-GL or ECC-EL for calendar year. The agreements must be signed before **16th Oct. 2017**. Agreement will be signed on a unified form provided by EJU. Clubs must be ready to present the signed agreements to EJU upon request.

Once an athlete signs for a club he is bound to this particular club and he cannot be transferred to another club for ECC-GL or ECC-EL in running calendar year. An athlete who would sign for more than one club in particular year will be suspended from participation in ECC-GL and ECC-EL in that year.

Foreign/domestic Judoka

A judoka registered in IJF JUDOBASE under the same nationality as the country the club is representing is defined as **domestic judoka**.

A judoka registered in IJF JUDOBASE under a different nationality than the country the club is representing is defined as **foreign judoka**.

In case of double (multiple) citizenship of an athlete the relevant nationality is based on the nationality the athlete holds in IJF WRL. The IJF rules of changing nationality fully apply for ECC-EL and ECC-GL.

There is maximum quota of 2 (two) foreign judoka in a team for each team contest (further regulations apply - see 9.1).



5. INSCRIPTION

Authorization/Nomination of qualified clubs (Form 1a)

Deadline: Monday, 9th October 2017 (23:59HRS CET)

The National Federation shall confirm the results of the relevant National Club Championships edition, appoint a contact person and nominate their participating clubs by filling in and sending Form 1a to EJU Head Office.

Further, the National Federation has to create the club(s) in JUDOBASE.

Team Inscription (Form 1b)

Deadline: Monday, 9th October 2017 (23:59HRS CET)

The qualified and authorised clubs have to send their Team Inscription. This inscription is to confirm participation of the team and should be signed by the President of the Club. This inscription does not have to contain the number and names of the competitors.

Nominal Inscription (JUDOBASE & signed and stamped pdf to EJU Head Office)

Deadline: Monday, 16th October 2017 (23:59HRS CET)

All registered teams have to enter all delegates and athletes (both domestic and foreign judoka) in JUDOBASE. Nominal inscription is not limited to any quota or maximum number of athletes (both domestic and foreign judoka).

A pdf from JUDOBASE, displaying all entered athletes per club, has to be created, signed and stamped and sent to headoffice@eju.net before the deadline above.

Since after this date only one injured athlete may be replaced, it's highly recommended to inscribe as many athletes as possible to have a sufficient number of athletes also in case of further injuries.

Foreign judoka have to be allocated to the respective club by their National Federation in order to enable the club to enter this athlete for ECC-GL (same procedure for ECC-EL).

The following example shows all actions to be taken to include an athlete from Cyprus in the team list of the club from Andorra.

- 1) National Federation of Andorra has to create the club in JUDOBASE.
- 2) The club from Andorra has to conclude the agreement provided by EJU with the athlete from Cyprus.
- 3) National Federation of Cyprus has to allocate the athlete to the club from Andorra in JUDOBASE.
- 4) The club from Andorra has to register the athlete from Cyprus for ECC-GL.

Final Team List Confirmation

During Accreditation: 24th November 2017

The final list of the team, minimum three (3) competitors, is confirmed with the EJU official at the accreditation. The competitors on the final list of Club can only be chosen from the nominal list entered in JUDOBASE by **12th October 2017 (Only one injured athlete can be replaced!)**.

KINDLY NOTE: NO EXCEPTIONS CAN BE MADE IN CASE OF LATE SUBMISSION OF ONE OF THE FORMS.

6. ENTRY FEE

The fee for participation is **1000 €** per team. Payment deadline is the **9th October 2017** together with the nominal inscription. This fee also includes the special ECC labels for the backnumber.

The EJU bank account: European Judo Union (EJU)
Bank of Valletta (MLT)
Address: 31/6 Triq San Federiku, Valetta, Malta
IBAN: MT38VALL22013000000040019971724
BIC: VALLMTMT

Notice: All bank fees and bank transfer costs are to be paid by the mandatory.

In case that a team withdraws from the competition and has not informed the Organiser and the EJU Head Office by written notice at least 1 month before the date of the competition, the club will not be refunded the entry fee. No club can lay claim to any additional compensation what's ever.



7. DEADLINES

Authorization of qualified clubs (Form 1a):	Oct. 9 th 2017
Team Inscription (Form 1b):	Oct. 9 th 2017
Payment entry fee:	Oct. 9 th 2017
Nominal inscription (JUDOBASE & signed and stamped pdf):	Oct. 16th 2017
Hotel Reservation (Form 3):	Oct. 16 th 2017
Visa Application (Form 6):	Oct. 16 th 2017
Hotel payment:	Oct. 26 th 2017
Travel details (Form 4):	Nov. 11 th 2017

8. ACCREDITATION

The times and place for check-in and accreditation are specified in the program. Club delegations must arrive and check-in within the time limits provided. A maximum of 2 representatives per Team is allowed in the accreditation room.

Final Team List Confirmation

A list of all the inscribed competitors per each team will be generated by the EJU, from which the head of delegation will select the athletes for the final team list (see 5. Inscription). **Note: Only one injured athlete can be replaced!** The final team list is confirmed by the EJU official.

Accreditation Cards for Officials

In case an official has no JUDOBASE entry for this event (late entries and replacements), the following rules apply:

	NO IJF Official ID Card	Late entry IJF Official ID Card: YES	Replacement IJF Official ID Card: YES
Athlete	<ul style="list-style-type: none"> ENTRY NOT POSSIBLE 	<ul style="list-style-type: none"> ENTRY NOT POSSIBLE 	only one injured athlete can be replaced letter + 0€
Delegates (Head of delegation, Coach, Doctor ...)	<ul style="list-style-type: none"> ENTRY NOT POSSIBLE REPLACEMENT NOT POSSIBLE 	letter + 0 €	letter + 0 €

Please note:

- Persons, who are banned by their Federation, cannot be entered as late entry or replacement.
- Persons without IJF ID Card can only be entered on spot, if IJF ID Card will be ordered until end of Accreditation.

Control of Nationality

Each competitor's **PASSPORT/National ID Card** (showing nationality, date of birth and picture) or copies of these documents in case the competitors are still travelling will be requested by the EJU official to check nationality and age of the competitors.

EJU finances

The National Federation, the club is representing, must be in order with the annual fee and other financial obligations to the EJU. The entry fee per team must be paid to the EJU. In order to take part at the competition, the club must have fulfilled the necessary payments to the organizer and the EJU.

In case there was overpayment, EJU Treasury shall transfer this difference to the Federation or Club account.

Organizer finances

The Organizer checks that all payments for hotel accommodation have been settled. Any pending invoices with the organiser should be settled here. The delegations' departure date, time, number of people and travel details are also confirmed at this stage. A contact name and number for each delegation should be given.



Flag and Anthem Control

The head of delegation confirms the flag and anthems which will be used for the medal ceremony.

Accreditation cards are handed over to the team representatives after finishing all the checks and payments.

9. TECHNICAL DETAILS

9.1 Composition of Team for Contest

The team should consist of five (5) competitors one in each of the following weight categories:

Women: -52 kg; -57 kg; -63 kg; -70 kg; +70 kg

Men: -66 kg; -73 kg; -81 kg; -90 kg; +90 kg

In order to be represented, the team must be composed of at least 3 (three) competitors who can compete in 3 (three) different weight categories.

Foreign judoka

There is maximum quota of 2 (two) foreign judoka in a team for each team contest. In case the team is represented in a team contest by total of 4 athletes or 3 athletes the quota is one (1) foreign judoka in a team.

The team contest will be held from the lightest to the heaviest weight category. The competitors will be entered during the weigh-in in the category they belong to. However, they can compete in the category immediately above their own category.

9.2 Competition System

Elimination system with repechage starting at the first round to ensure a minimum of 2 team contests for each inscribed team.

The teams will be allocated positions in the competition table by means of a "draw" and an elimination system will be used to produce two finalists who will compete in the final contest for gold and silver medals.

All teams defeated in the first round and later rounds of elimination table will be positioned in repechage table in a pre-set order.

The winners of two repechage final contests will compete in bronze medal contests against the loser of the semifinal contest of the opposite half of elimination table.

The winners (2) of those team contests are placed third;

The losers (2) are placed fifth;

The losers (2) of repechage final contests are placed seventh.

The losers (4) of the repechage contests preceding the repechage finals are placed ninth.

The competition sheet templates are in attachment of these outlines.

The ECC 2016 for Women and Men will be held on one day on 4 mats. However the number of mats can be modified according to the total of inscribed teams.

9.3 Duration of Individual Contests

4 minutes and Golden Score without time limit.

9.4 Line-Up of the Team

Before each team contest the team leader must present to the Sport Director the line-up of the team. At each round he/she has the right to replace one or several competitors by other competitors of the corresponding weight category or from the next lower category.

All competitors in the line-up for the team entering the mat for the official bow **have to compete**. If one competitor does not compete the team will lose by disqualification 0 - 5!

A competitor, who has presented himself for the contest and does not compete, loses the right to compete in the event.

If one team does not arrive for the match, the other team will be declared the winner 5 - 0.

9.5 Decision

The team contest consists of 5 individual contests in the 5 weight categories (see 9.1).



In case of an equal score at the end of an individual contest, the contest will be continued with Golden Score.

The number of individual contests won will decide the winning team.

In case the both teams are represented by 4 athletes only and the number of wins is equal, the team with the higher sum of winning technical scores is the winner. In case the sum of winning technical scores is also equal, there will be a draw of one weight category for a decisive contest under direct Golden Score rule.

10. DRAW

The draw will take place one day before the competition; place and time can be found in the program.

EJU Sport Directors will decide and inform about the system of seeding after Nominal inscriptions of teams.

At least one delegate from each participating club must attend the draw; a maximum of two delegates per team will be allowed in the draw room.

Dress code: Jacket suit with tie.

11. WEIGH-IN

Place and time for weigh-in can be found in the program. The official scales are available the whole day for unofficial weight control from 08:00 - 19:00.

There is a general weight tolerance of 2 kg for all weight categories.

The weigh-in will be organised by teams, the full team must be presented for the weigh-in and the weight of the athletes must fall within the limits of their category to which they belong to.

Athletes...

- ... presenting themselves after the closing of the weigh-in, cannot participate.
- ... can present themselves only one time on the scales during the official weigh-in.
- ... must present their EJU accreditation and **PASSPORT** or **National ID Card** showing nationality, date of birth and picture at the official weigh-in.

12. AWARDING & PRIZE MONEY

The organizer shall provide for the medal ceremony:

- First place: 1 Trophy, 11 Gold medals and prize money
- Second place: 1 Trophy, 11 Silver medals and prize money
- 2 Third places: 2 Trophies, 22 Bronze medals and prize money

Every medallist team can take part at the awarding ceremony with a max. 10 judokas and 1 coach.

It is strictly forbidden for competitors on the podium to bring national flags or the similar identification other than the one represented in the regular manner on their equipment. Any demonstration of religious, political, personal or commercial sign is prohibited and so is wearing a cap or any other head cover.

Teams placing 1st, 2nd and 3rd will receive prize money as follows:

MEN		WOMEN	
First place:	€ 5.000.-	First place:	€ 5.000.-
Second place:	€ 3.000.-	Second place:	€ 3.000.-
Third places:	€ 1.000. x 2	Third places:	€ 1.000. x 2

Prize money will be paid by bank transfer not later than 10 (ten) days after competition according to bank details sent by Club to EJU Head Office. After receipt of payment, Club will have obligation to send signed Acknowledgement (EJU Treasury will send the form).

Qualification for ECC-GL 2018

In general, the four (4) medallists of ECC-GL 2017 qualify for ECC-GL 2018, but a quota of 2 teams per National Federation applies.

13. OFFICIAL HOTEL

All participants and delegates, who need to be accredited, have to book their accommodation via the organisers. A minimum stay of 2 nights is obligatory.

For athletes, coaches, referees, medics and officials the Organising Committee provides hotels in two categories all on bed and breakfast, half board or full board. The rates quoted are in Euro per person/per night and include breakfast.

Category 1

Hotel Vienna House

Address: Auf dem Johannisberg 1 ; 42103 Wuppertal

80 rooms available

Distance to Sports Hall: 3 km



	Bed & Breakfast	Lunch at the hotel	Lunch box at the venue	Dinner at the hotel
Single room	125 €	22 €	15 €	22 €
Double room	90 €			
Single room (lounge)	135 €			
Double room (lounge)	98 €			

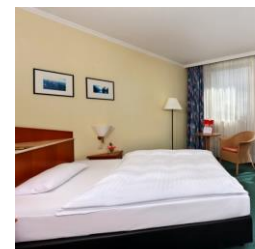
Category 2

Hotel Intercity

Address: Döppersberg 50 ; 42103 Wuppertal

100 rooms available

Distance to Sports Hall: 4 km



	Bed & Breakfast	Lunch at the hotel	Lunch box at the venue	Dinner at the hotel
Single room	114 €	22 €	15€	22 €
Double room	79€			

The **binding hotel reservation** (Form 3) must be sent to the organizer by **October 16th, 2017**. Reservations will be processed strictly according to the date of booking. In case the requested category is fully booked, the club will be informed and asked to make a new reservation. Reservations can be confirmed only after receiving at least 50 % of the total accommodation cost that must be sent to organiser's bank account before **October 26th, 2017**, otherwise accommodation cannot be guaranteed for your delegation.

In case a federation does not send the hotel reservation to the organizers before **October 16th, 2017**, a **10% surcharge** will be added to the expenses (in case of bank transfer and in case of cash payment!).



Account details:

Name of Account Holder: DJB Service GmbH
Name of Bank: Stadtparkasse Wuppertal
Address: Otto Fleck Schneise 12 ; 60528 Frankfurt
Payment Details: ECC-2017-Wuppertal
IBAN: DE45 330 5000 0000 0151 563
SWIFT address: WUPSDE33XXX

If a federation can prove that a bank transfer is not possible for them, cash payment on the spot is accepted. In this case the organizers must be informed in advance and the payment must be effected based on the binding hotel reservation.

Credit cards cannot be accepted on the spot.

Cancellation policy

Up to 30 days before arrival: full refund

From 30-15 days before arrival: 50% refund

14 days or less before arrival: no refund

14. FAREWELL DINNER

The organiser will prepare a farewell dinner for all teams together on Sunday evening.

15. TICKETS

Tickets can be ordered online: doo.net/event/13907/order

Participating teams can receive a special discount code upon request.

16. TRAINING

Training will be available on Thursday (23.11) from 16:00 - 21.00, on Friday (24.11) from 9:00 - 18:00 and on Saturday (25.11) from 10:00 - 13:00 on request to the organiser

17. TRANSPORT

NEAREST AIRPORT: Düsseldorf

NEAREST TRAIN STATION: Main station Wuppertal

The organizer will take care of the transportation from the above mentioned airports and railway stations to the official competition hotel and competition venue during the competition. Transport will be provided only to those who are accommodated via the organiser.

18. VISA

The organisers will help with obtaining entry visas for competitors and officials. Please specify all information that is needed in the invitation letters for visas and submit **Form 6** and a scanned copy of the first page of the passports until **Oct. 16th, 2017**.

19. MEDIA

Official or EJU recognized media can apply online for a Media accreditation via the following link:

<http://www.eju.net/accreditation-registration>

Time and place for Media Check-in are stated in the program.



20. JUDO GI CONTROL

Approved Judogi

All Judoka must compete in IJF Approved Judogi (only red label allowed) and Judogis from all IJF suppliers are allowed (see www.ijf.org → Official Supplier List).

Judogi Control

It will be operated with a Sokuteiki prior to the fight. Judogi must have an IJF Official Label “APPROVED JUDO GI” with an optical code which cannot be falsified. The label will be controlled with an optical lamp. Each of the competition clothing articles (jacket, trousers and belt) must have an IJF official label.

Backnumber

Each competitor taking part in the EJU events is obliged to have sewn on the back of his Judogi the **official backnumber** (both EJU and IJF are allowed) bearing his surname and his National Olympic Committee abbreviation. The backnumber can be ordered from www.mybacknumber.com or www.ijfbacknumber.com (Attention: production and delivery takes around 4 weeks).

The special back label (sticker) of the ECC EL 2017 will be given to the head of delegation during registration, and the athletes have to stick it themselves on the sewed backnumber (dry judogi!).

Markings and Advertising

The space on the **shoulder stripes** (25cm x 5 cm on both right and left side) and on the **upper arms** (10cm x 10cm on both right and left side) can be either used for **own sponsors of the Federation or Judoka or EJU Suppliers, BUT not for any other Judogi supplier.**

The space on the **right chest** (5cm x 10cm) can be used by the Judoka for his/her own sponsor. The logo of a Judogi brand can only be used, if it corresponds with the brand of the Judogi itself and if it is an **EJU Supplier**. Further, no logo of a competing brand of the advertising reserved for the Federation can be used (unless approval granted by the Federation).

Please note: On all advertising spaces it is strictly prohibited to promote tobacco, alcohol, any substances listed in the doping code, or any product or service contrary to public morals.

The space on the **left chest** (10cm x 10cm) can be used for the national colours or the national emblem corresponding with the IOC code on the backnumber (regional emblems are not allowed). In European Club Championships the club logo can be used instead of the national emblem.

All other markings on the Judogi, like Judogi brand logos, name of Judoka, etc. have to comply with the IJF Judogi Rules.

Detailed information is available on <http://www.eju.net/statutes>.

Important:

- If an athlete does not respect the Judogi rules, the athlete will not be permitted to pass the Judogi Control, and the coach who is responsible for the athlete will be suspended for the rest of the competition day.
- The organiser is not obliged to provide reserve Judogi at Judogi Control, but the athlete is allowed to present himself in another IJF Approved Judogi, complying with the Sokuteiki rule (and without backnumber) - in this case no coach can go with this athlete to the mat!
- In the case of a repeated offence the coach will be suspended for the rest of the competition.

21. REFEREEING

21.1 Selection & Registration of Referees

The EJU Refereeing Commission will select the referees for these Championships by name, based on the results of the classification. The federations will get the information in time and later, the whole list of referees will be available on the EJU homepage in the calendar section.

The costs for travelling, board and lodging of the referees are at the costs of own federation.

After the nomination of the referees, the federation must confirm the participation to EJU Head Office by the deadline stipulated in the letter. Further, the referee must be entered by his/her federation like every other delegate in **JUDOBASE** and also the hotel reservation has to be done by the national federation.

21.2 Meeting of the Referees

A referee meeting is scheduled the day before the competition day. Time and place are stated in the program. The attendance to the Referee meeting is strictly compulsory.



21.3 Refereeing Rules

The competition will be carried out according to the rules and sporting codes of the IJF and EJU.

The bow

- The contestants must not shake hands BEFORE the start of the contest.
- When the athletes are leaving the mat they must wear judogi in proper way and are not allowed to take out any part of the judogi or the belt before leaving the field of play.

21.4 EJU Jury

The jury is not an appeals jury. It can be consulted by the referees in case of any difficulty. In no circumstances can the competitors or their representatives of their delegation consult the jury. No protest against the referees' decisions will be accepted.

Withdrawal by injury

During eliminations

- if the responsibility of the injury cannot be attributed to one of the competitors, the injured fighter shall lose the contest.
- if the responsibility of the injury is attributed to one of the competitors, the other will be declared winner. The competitor responsible for the injury will not be able to participate at the repechage.
- In case of withdrawal, the competitor cannot present himself for the following contests.

During the finals or semi-finals

- if the responsibility of the injury cannot be attributed to one of the competitors, the injured competitor shall lose the contest.
- if the responsibility of the injury is attributed to one of the competitors, the other will be declared winner.

Direct Hansokumake

In case of direct Hansokumake against the spirit of judo the judoka cannot continue the competition. In some cases, depending on situation, the EJU jury may decide to give the athlete disciplinary sanction

Note: A competitor who has been declared as a loser by injury can continue the competition

22. ANTI-DOPING

Doping test will be performed according to IJF Antidoping Rules (IJF SOR). One weight category is drawn for the Male and another for the Female. Every registered competitor of the team takes part to the draw lot. The Gold medal winner and another drawn medallist are tested. In the case of non-contestation of that weight category then the immediate superior weight category or immediate inferior of the same team will be tested - Two (2) tests for the Male and two (2) tests for the Female.

23. COACHING

Code of behavior of coaches as defined in the IJF Sports and Organization Rules, Annex 4 will be strictly observed, inclusive the Dress Code.

- Coaches are not allowed to give indications to the competitors while they are fighting.
- Only during the pause time (after matte), will coaches be permitted to give indications to their athletes.
- After the pause is finished, and the fight continues (hajime), coaches must keep silent.
- If a coach doesn't follow these rules, she/he can be expelled from the competition area.
- If coaches persist with such behavior the EJU Accreditation will be taken away for the day. If the coach still persists with this behavior from outside the competition area, she/he could be penalized further.



24. RESPONSIBILITY OF THE FEDERATIONS

Medical Certificate

The sex certificate and the medical certificate of the competitors are not required. The competitors will compete under the full responsibility of the federations.

Insurance

Each federation is responsible for insuring its competitors against 'injury and third part risk (public liability)' during the period of the championships. The European Judo Union declines all responsibility.

Attitude of Competitors

The federations are responsible vis-à-vis the EJU concerning the general attitude of their competitors.

Image of Athletes

The federations are responsible to have obtained the rights for the EJU to use the competitor's image in whichever way it considers it necessary for the promotion of the sport.

Neither the organizer of the event, nor the European Judo Union (nor any of its officials or members) will be liable or responsible for any personal injury nor for any loss or damage to your property arising out of your participation and travelling in connection with these events.

25. FUNDAMENTAL PRINCIPLE

All National Federations, officials, coaches and athletes participating in this event have to respect and accept the authority of the EJU officials, the rules and statutes of the International Judo Federation and European Judo Union. Individuals deemed to have acted against the EJU or IJF, their principles or purposes shall be subject to suspension or expulsion from the event and/or cancellation of their accreditation cards.

26. AWARDING CEREMONIES

All competitors having won a medal have to attend the ceremony to receive their medal in person. If a competitor is absent during the awarding ceremony for no valid reason, he/she will lose the right to have the medal. It is strictly forbidden for competitors on the podium to bring national flags or the similar identification other than the one represented in the regular manner on their equipment. Any demonstration of religious, political, personal or commercial sign is prohibited and so is wearing a cap or any other head cover.

EUROPEAN JUDO UNION

Head Office, Wehlstrasse 29/1/111, 1200 Wien, AUSTRIA

Tel Number: +43 1 330 43 43

Email: headoffice@eju.net