

VERSION - 24 NOVEMBER 2016  
INTERNATIONAL JUDO FEDERATION



**PRESENTATION**

**JUDO**

**PARIS GRAND SLAM**

**2017 France**

**11-12 February**





# PARIS GRAND SLAM 2017 France



**Marius L. VIZER**  
IJF President  
[@MariusVizer](#)

Dear Judo Family,

The Paris Grand Slam 2017 is the start of a new year, a new season and a fresh opportunity to show the world our magnificent sport and its champions who are great role models.

The traditional first Grand Slam of the year is the curtain-raiser of the IJF World Judo Tour 2017 and will be a sporting spectacle that the world will enjoy along with the 15,000 fans in attendance.

I would like to express my continued gratitude to the French Judo Federation for their desire to deliver the best event possible and their insatiable passion for judo which is a key factor in the Paris Grand Slam being such an overwhelming success on an annual basis.

I wish you all a wonderful stay in France and the IJF team will be at your disposal throughout your time in Paris.



**Jean-Luc ROUGE**  
President of the  
French Judo  
Federation

Dear Judoka,

It is with great pleasure that we have the honor to welcome you in Paris for the 2017 Paris Grand Slam.

We start an Olympiad that will lead us to Tokyo allowing some of your athletes to confirm their talent, but also others to become important actors of the World Judo Tour.

It is a great opportunity to enhance judo in order to demonstrate, like in Rio, the universality of our discipline.

The mobilization and the presence of media demonstrate well the growing interest for judo of which you are the first ambassadors.

I wish you excellent results and a very good stay in our capital.

11-12 February



**IMPORTANT INFORMATION:** Further to the attacks in France, the French government has decreed THE STATE EMERGENCY until May 2017.

The consequences are as follows:

- stricter visa procedures
- reinforced security controls of access
- control of financial flows (to favour bank transfers rather than payments in cash)

Thank you for your understanding.



## 1. DEADLINES

**PLEASE RESPECT ALL DEADLINES AND RULES DETAILED IN THESE OUTLINES.**

- Hotel First Entry (booking by number) and payment of 50%: **19 December 2016**
- Hotel Final Entry and full payment: **21 January 2017**
- Visa application (with passport photocopies) at [vmatczak@ev3nt.fr](mailto:vmatczak@ev3nt.fr): **6 January 2017**
- Travel information: **30 January 2017**
- Hotel booking: please use only this website [www.parisgrandslam.com](http://www.parisgrandslam.com)
- [Judobase.org](http://Judobase.org) inscription: **21 January 2017 23:59 CET.**



## 2. ORGANIZERS

**French Judo Federation**

Address: 21-25 avenue de la Porte de Châtillon, 75014 Paris, France

Website: [www.ffjudo.com](http://www.ffjudo.com) | Fax: +33 (0)1.40.52.16.14.

**Hotel booking**

Anne-Claire GOURMELON E-mail: [parisgrandslam@ffjudo.com](mailto:parisgrandslam@ffjudo.com) Phone: +33 6 15 56 76 65

**Transport**

Manuel KOUA E-mail: [transport@ffjudo.com](mailto:transport@ffjudo.com) Phone: +33 7 81 38 65 46

**Ticket (online sales only)**

Website : <https://ffjda.trium.fr/index.php/33>.



## 3. COMPETITION VENUE

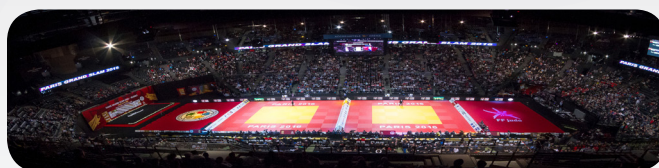
**ACCORHOTELS ARENA**

Address: 8 boulevard de Bercy,

75012 Paris, France

Capacity: 14,500 seats

Website: [www.accorhotelsarena.com](http://www.accorhotelsarena.com).



## 4. VISA

The organizer is happy to help any country with obtaining visa for athletes and officials. For nations, who need a visa to enter the organizing country, please send a full list of participants with full names, passport numbers, date of birth, and positions along with scanned copies of all passports before the deadline stipulated.

Visa contact: Vincent MATCZAK [vmatczak@ev3nt.fr](mailto:vmatczak@ev3nt.fr) Visa application: **before 6 January 2017.**



# PARIS GRAND SLAM 2017 France



## 5. TRANSPORT

The organizer will provide transportation for competing delegations during the event.

For arrivals and departures a transfer service will be available to and from the official hotels/sport hall ONLY from the following locations:

- Roissy Charles-de-Gaulle airport
- Orly airport
- Paris Train stations

**WARNING:** transport will not be organized from/to Paris-Beauvais airport

Transport will also be provided to and from the official hotels/sport hall ONLY to the accreditation venue, the draw venue, weigh-in, training and competition unless they are within walking distance.

Arrivals and departures information must be sent to the organizers (please use the [www.parisgrandslam.com](http://www.parisgrandslam.com) website) by **30 January 2017**.

Contact: Manuel KOUA E-mail: [transport@ffjudo.com](mailto:transport@ffjudo.com) Phone: +33 7 81 38 65 46.

## 6. PROGRAMME

DATE	TIME	ACTIVITY	
Thursday 9 February	14:00-20:00	Accreditation	ACCORHOTELS ARENA
Friday 10 February	09:00-12:00 14:00 After draw 19:00-20:30 19:30 -20:00 20:00-20:30	Accreditation Draw Referees' meeting Judogi back number check Unofficial weigh-in Official weigh-in W: -48 kg, -52 kg, -57 kg, -63 kg M: -60 kg, -66 kg, -73 kg	ACCORHOTELS ARENA
Saturday 11 February	10:00* 17:00 19:00-20:30 19:30 -20:00 20:00-20:30	Competition day 1 W: -48 kg, -52 kg, -57 kg, -63 kg M: -60 kg, -66 kg, -73 kg Preliminaries (on 4 tatami) Final Block (on 2 tatami) Judogi back number check Unofficial weigh-in Official weigh-in W: -70 kg, -78 kg, +78 kg M: -81 kg, -90 kg, -100 kg, +100 kg	ACCORHOTELS ARENA
Sunday 12 February	10:00* 17:00	Competition day 2 W: -70 kg, -78 kg, +78 kg M: -81 kg, -90 kg, -100 kg, +100 kg Preliminaries (on 4 tatami) Final Block (on 2 tatami)	ACCORHOTELS ARENA
Monday 13 February	Departures		

\* The start time may change depending on the final number of athletes.





## 7. ACCOMMODATION

**Hotel booking: please use only this website [www.parisgrandslam.com](http://www.parisgrandslam.com)**

**Contact: Anne-Claire GOURMELON** E-mail: [parisgrandslam@ffjudo.com](mailto:parisgrandslam@ffjudo.com)

Phone: +33 6 15 56 76 65.

### CATEGORY A

Single Price full board (per person per night): 280€

Single Price bed and breakfast (per person per night): 228€

Twin (2 separate beds) Price full board (per person per night): 187€

Twin (2 separate beds) Price bed and breakfast (per person per night): 135€

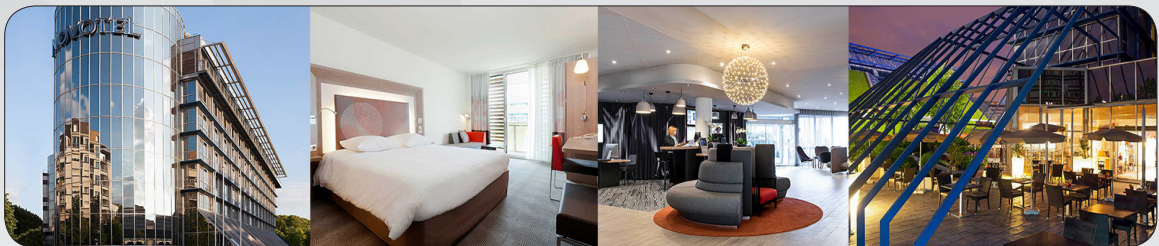
Alone in a twin prices: the same as single prices.

### NOVOTEL Paris Bercy

85 rue de Bercy, 75012 Paris, France • Tel : +33 1 43 42 30 00.

<http://www.novotel.com/fr/hotel-0935-novotel-paris-bercy/index.shtml>

Distance from airport CDG-Roissy: 35km • Distance from sport hall : 0.1km



### CATEGORY B

Single Price full board (per person per night): 255€

Single Price bed and breakfast (per person per night): 203€

Twin (2 separate beds) Price full board (per person per night): 174€

Twin (2 separate beds) Price bed and breakfast (per person per night): 122€

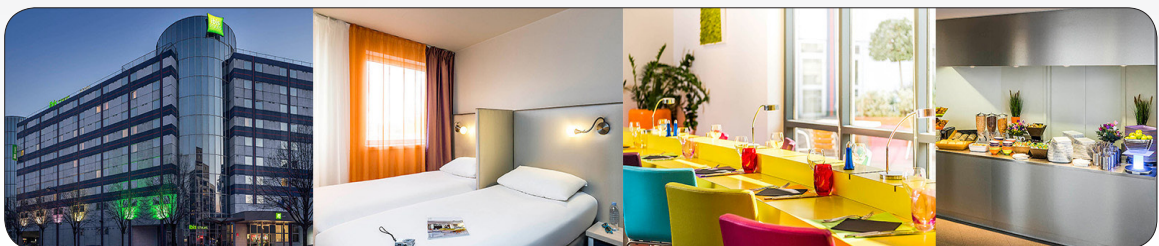
Alone in a twin prices: the same as single prices.

### IBIS STYLES Paris Bercy

77 rue de Bercy, 75012 Paris, France • Tel : +33 1 53 46 50 50

<http://www.accorhotels.com/fr/hotel-0941-ibis-styles-paris-bercy/index.shtml>

Distance from airport CDG-Roissy: 35km • Distance from sport hall: 0.1km





# PARIS GRAND SLAM 2017 France

## CATEGORY C

Single price full board (per person per night): 174€

Single price bed and breakfast (per person per night): 119€

Twin (2 separate beds) Price full board (per person per night): 136€

Twin (2 separate beds) Price bed and breakfast (per person per night): 83€

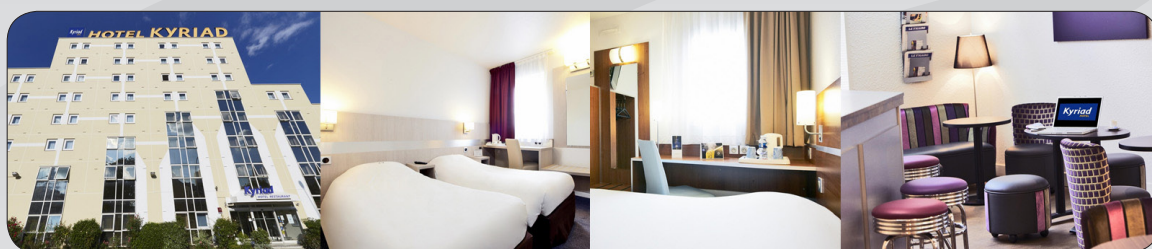
Alone in a twin prices: the same as single prices.

### KYRIAD Paris Sud porte d'Ivry

1-11 rue René Villars, 94200 Ivry-sur-Seine, France • Tel : +33 1 1 46 71 00 17

<http://www.kyriad-paris-sud-porte-divry.fr>

Distance from airport CDG-Roissy: 33km • Distance from sport hall: 3.5km



## CATEGORY D

Single Price full board (per person per night): 157€

Single Price bed and breakfast (per person per night): 104€

Twin (2 separate beds) Price full board (per person per night): 128€

Twin (2 separate beds) Price bed and breakfast (per person per night): 75€

Alone in a twin prices: the same as single prices.

### F1 Paris porte de Châtillon

23 avenue de la porte de Châtillon, 75014 Paris, France • Tel : +33 891705229

<http://www.hotelf1.com/fr/hotel-5010-formule-1-hotelf1-paris-porte-de-chatillon/index.shtml>

Distance from airport CDG-Roissy: 40km • Distance from sport hall: 7.5km



## PLEASE NOTE

Reservations of extra rooms at the check-in may be surcharged with an additional 10%.

If rooms need to be cancelled, please inform the organizer immediately. Cancellation of rooms cannot be made at check-in. Illness, injuries or visa problems are not valid reasons for the cancellation of rooms.

If rooms are cancelled the organizer has the right to charge the participating delegation as follows:

- Up to 35 days before the arrival, full refund.
- From 35-20 days before the arrival, 10% of the total amount will be refunded.
- From 20-0 days before the arrival, any cancellation of rooms or no-show will result 100% of the charge of the hotel costs that must be paid by the National Federations.

All bank fees and bank transfer costs are to be paid by the participating National Federation to the following bank:

**Beneficiary's Name: F.F.J.D.A.**

**Bank Name: CREDIT LYONNAIS, PARIS SDC IDF EST 2**

**Bank A/C No: FR94 3000 2007 9700 0000 4057 D27**

**Bank Address: 59 rue La Fayette, 75009 Paris, France**

**SWIFT Code: CRLYFRPP**

(Please input the below information correctly and completely on the transfer document and any procedures related to amendment of the bank transfer MUST be done before arrival).



## 8. JUDO GI

Athletes must compete wearing an IJF approved judogi supplied by one of the following manufacturers:

**Greenhill, SFJAM NORIS, DANRHO, MIZUNO, Double D Adidas, HAYAKAWA, Fighting Film, Budo Sport AG, ESSIMO, MATSURI B.V, KAPPA, DAEDO, TOYO Martial Arts.**



## 9. MEDALS AND PRIZE MONEY

**First place:** Gold medal and 5,000 US\$ (judoka: 4,000 US\$ and coach 1,000 US\$)

**Second place:** Silver medal and 3,000 US\$ (judoka: 2,400 US\$ and coach 600 US\$)

**Third places (x2):** Bronze medals and 1,500 US\$ for each (judoka: 1,200 US\$ and coach 300 US\$).



## 10. DOPING CONTROL

Doping control will include in each category:

- a. the winner of the category
- b. one of the three other medal winners by draw

The draw (for b) is carried out in accordance with the IJF Anti-doping Rules and the IJF SOR during the competition before the start of the final block.

Competitors have to report to the Doping Control Station immediately after signing the Notification form. Pursuant to WADA ISTI Art. 5.4.4, prior to doping control, athletes are allowed to take part in the awarding ceremony and fulfil their press commitments or receive medical treatment if needed. The selected competitors will be constantly accompanied by an official chaperone (appointed by the organizing committee) from the time of notification until arriving at the Doping Control Station. A person of the athlete's choice (team doctor, coach, trainer, delegation head etc.) may accompany them.





## GENERAL INFORMATION



### 11. FUNDAMENTAL PRINCIPLE

All national federations, officials, coaches and athletes participating in the event described in these outlines have to respect and accept the authority of the IJF Officials, the IJF Statutes, the IJF Sports and Organization Rules (SOR), the IJF Refereeing Rules and the IJF Antidoping Rules. Individuals deemed to have acted against the IJF, its principles or purposes shall be subject to suspension or expulsion from the event and/or cancellation of their accreditation cards.



### 12. INSURANCE

Each National Federation is responsible for its competitors (the control of non-pregnancy as well as the control of gender are placed under the responsibility of the National Federations) and must assume all responsibility for accident and health insurance as well as the civil liabilities for their competitors and officials, during the event described in these outlines.

The organizer of the event and the IJF will not be responsible for any insurance related to the above-mentioned matters. Nevertheless the National Judo Federation staging the event shall take all necessary actions to provide insurance coverage against civil liability for the entire duration. The organizer of the event and the IJF have no liability for any claims of injury, illness or death arising out of the participation and traveling in connection with this event.



### 13. ACCOMMODATION

Hotel reservations MUST be made through the organizing committee. All delegates inscribed for an IJF official event must stay in one of the official hotels suggested by the organizers for a minimum of one (1) night. If this is not respected accreditation will not be given.

Any damage to hotel property resulting from the stay of a national delegation will be charged to the national federation and must be paid in full. Delegations are kindly requested not to dry clothing (including judogi) or have training sessions in the corridors of the official hotels.

According to the new International Judo Federation (IJF) rule enacted on the 2 December 2012 in Tokyo "the organizing country should not request fee penalties for countries which cannot make bank transfers but can pay in cash money upon arrival. On the other hand, they should inform well in advance the organizing country and specify the number of participants before the deadline".



### 14. COMPETITION RULES

The competition will be conducted in accordance with the latest IJF SOR, IJF Refereeing Rules and IJF Anti-Doping Rules.

System of competition: quarterfinal (last 8) repechage

Weight categories:

Men -60kg, -66kg, -73kg, -81kg, -90kg, -100kg, +100kg

Women: -48kg, -52kg, -57kg, -63kg, -70kg, -78kg, +78kg

Duration of contest: Men five (5) minutes and women (4) minutes (real time).





## 15. INSCRIPTION OF DELEGATES

Competitors can only be entered in one weight category and only entries of IJF member national judo federations will be accepted. Participating athletes must be born in 2002 (15 years in the calendar year) or before. Each national federation can inscribe a maximum of

two (2) athletes per weight category.

The organizing national federation can inscribe a maximum of four (4) athletes per weight category. Non-competing athletes or training partners can be inscribed as judoka.

Inscription of all participants must be done using the IJF online registration system at <https://www.judobase.org> The final deadline for inscription is 20 days before the draw.

All athletes and officials must be entered on time. National federations missing the registration deadline will not be allowed to start and no exceptions will be made!

After the deadline no additional delegates can be added. Changes can be made one to one, like for like, due to injury or illness. For example an injured athlete can be replaced by another athlete regardless of gender or weight category. An ill team official can be replaced by another team official etc.

In cases where registered athletes are cancelled on the spot during accreditation without previous notification to the IJF, a penalty of 100 USD per athlete will apply. This penalty will be charged by the IJF to the National Federation.

For any support please contact [registration@ijf.org](mailto:registration@ijf.org) before the end of the deadline.



## 16. ACCREDITATION

The control of entries and issuing of accreditation cards will take place during accreditation (see program for time and place). At least one team official must attend in time to confirm the entries of all athletes and officials with his/her signature. Passports or photocopy of passports of all athletes must be available on request.

An accreditation card with photograph will be issued to athletes, officials and media. This accreditation card must be carried at all times.

A delayed appearance or no-show at control of entries may result in the exclusion of all participants from the draw and the event. In case of unforeseen delay of arrival the Federation must contact immediately the organizer and the IJF registration team ([registration@ijf.org](mailto:registration@ijf.org)).

Number of accreditations for officials:

1 – 4 competitors: 3 officials

5 – 9 competitors: 5 officials

10 or more competitors: 7 officials

Extra accreditation for delegation members can be purchased from the organizing committee for \$100.00 USD for the days of competition.



# PARIS GRAND SLAM 2017 France



## 17. TRAINING

Training is the responsibility of the organizing federation. Planning and scheduling of training sessions will be organized taking into consideration requests made by delegations daily on a first request made first served basis. If you are interested in booking training please contact the organizer.



## 18. DRAW

Each national federation must send at least one delegate to attend the draw. A maximum of three (3) delegates per national federation (2 officials and 1 athletes' delegate) will be authorized.

The top eight (8) athletes from the entered competitors in each weight category will be seeded according to the current World Ranking List.



## 19. JUDOGI CONTROL

Each competitor is obliged to have sewn on the back of his/her judogi a backnumber bearing his surname and his/her National Olympic Committee abbreviation. The backnumbers must be fixed horizontally and centred on the back of the judogi. They must be placed at a distance of 3 cm from the bottom of the collar. The backnumber can only be ordered from [www.ijfbacknumber.com](http://www.ijfbacknumber.com) or [www.mybacknumber.com](http://www.mybacknumber.com).

The Education and Coaching Commission will inspect the judogi jacket every evening. The checking process will start half an hour prior to the unofficial weigh-in and will end at the same time as the official weigh-in (19:00 – 20:30).

The backnumber and publicity should comply with the current IJF judogi regulations.

The official sponsor label of the event will be given provided that:

- The judogi are clean and dry.
- The backnumber, publicity and emblem are properly sewn and do not show any wear or tear.
- All previous advertising has been removed.

Guide to attaching and removing the sponsor label:

- Lay the judogi flat and attach the new sponsor label of the event on the back of the correct judogi.

White judogi: IJF sponsor

Blue judogi: Organizer's sponsor

- Ensure the label is firmly attached around the edges.

Immediately after the competition and before washing remove the sponsor label.

For further information on judogi rules please refer to the IJF SOR section 8 and appendix C.



## 20. WEIGH-IN

The weigh-in will be carried out in accordance with the IJF SOR section 7. The athlete's official weigh-in will be scheduled the day before the competition.

- Unofficial weigh-in: 19:30 to 20:00
- Official weigh-in: 20:00 to 20:30



## 21. COACHING

Coaches nominated by their national federations should respect the IJF Code of Ethics point 4 and IJF SOR point 9.6. Any coaches not adhering to these rules could be subject to disciplinary action.



## 22. AWARDING CEREMONY

The competitors wearing their white judogi (no shoes, flip flops or socks) will stand behind the podium according to the following order 2,1,3,3. Competitors having won a medal have to attend the ceremony to receive their medal in person. If a competitor is absent during the awarding ceremony for no valid reason they will lose the right to have the medal. It is strictly forbidden for competitors on the podium to bring national flags or the similar identification other than the one represented in the regular manner on their equipment. Any demonstration of religious, political, personal or commercial sign is prohibited and so is wearing a cap or any other head cover.



# PARIS GRAND SLAM 2017 France

## PARIS TRAINING CAMP 2017

**IMPORTANT INFORMATION:** Further to the attacks in France, the French government has decreed THE STATE EMERGENCY until May 2017.

The consequences are as follows:

- stricter visa procedures
- reinforced security controls of access
- control of financial flows (to favour bank transfers rather than payments in cash)

Thank you for your understanding.

### DEADLINE

- Package First Entry (booking by number) and payment of 50%: **19 December 2016**
- Package Final Entry and full payment: **21 January 2017**
- Visa application (with passport photocopies) at [vmatczak@ev3nt.fr](mailto:vmatczak@ev3nt.fr): **6 January 2017**
- Travel information: **30 January 2017**.

Package booking: please use only this website [www.parisgrandslam.com](http://www.parisgrandslam.com)

### ORGANIZERS

#### French Judo Federation

Address: 21-25 avenue de la Porte de Châtillon, 75014 Paris, France

Website: [www.ffjudo.com](http://www.ffjudo.com) | Fax: +33 (0)1.40.52.16.14.

Hotel booking: Anne-Claire GOURMELON • [parisgrandslam@ffjudo.com](mailto:parisgrandslam@ffjudo.com)

Phone: +33 6 15 56 76 65

Transport: Manuel KOUA • [transport@ffjudo.com](mailto:transport@ffjudo.com) • Phone: +33 7 81 38 65 46.

### DATES

From Monday 13 February 2017 noon to Thursday 16 February 2017 after lunch.

### PLACE

#### INSTITUT DU JUDO (big hall)

Address: 21-25 avenue de la Porte de Châtillon, 75014 Paris, France.

### PARTICIPANTS

Women and Men Seniors

Competitors have to be registered by their national federation.



# 11-12 February



## PROVISIONAL PROGRAM

Monday February 13th	Tuesday February 14th	Wednesday February 15th	Thursday February 16th	
9:00 – 17:00 ACCREDITATIONS at Institut du Judo	9:00 – 10:30 Training « Women »	9:00 – 10:30 Training « Men »	9:30 11:30 Training « Men»	9:30 11:30 Training « Women»
	11:00 – 12:30 Training « Men »	11:00 – 12:30 Training « Women »		
Lunch	Lunch	Lunch	Lunch	
14:30 – 16:30 Training « Women »	14:30 – 16:30 Training « Women »	14:30 – 16:30 Training « Men »	Delegation's departures	
17:00 – 19:00 Training « Men »	17:00 – 19:00 Training « Men »	17:00 – 19:00 Training « Women »		
Dinner	Dinner*	Dinner		

Trainings will take place at the Institut du Judo in the big hall.

The catering will be organized at the Institut du Judo in the Dojo Awazu.

\* As usual, coaches, officials and medical staff will be invited by the organizer for Tuesday's dinner, save the date! Invitation for 2-3 persons, confirmation recommended during the registration.

## ACCOMMODATION

Hotel booking: please use only this website [www.parisgrandslam.com](http://www.parisgrandslam.com)

Contact: Anne-Claire GOURMELON • [parisgrandslam@ffjudo.com](mailto:parisgrandslam@ffjudo.com)

Phone: +33 6 15 56 76 65.

## CATEGORY B

Single Price full board\* (per person per night): 185€

Single Price bed and breakfast (per person per night): 140€

Twin (2 separate beds) Price full board\* (per person per night): 130€

Twin (2 separate beds) Price bed and breakfast (per person per night): 85€

Alone in a twin Prices: the same as single prices

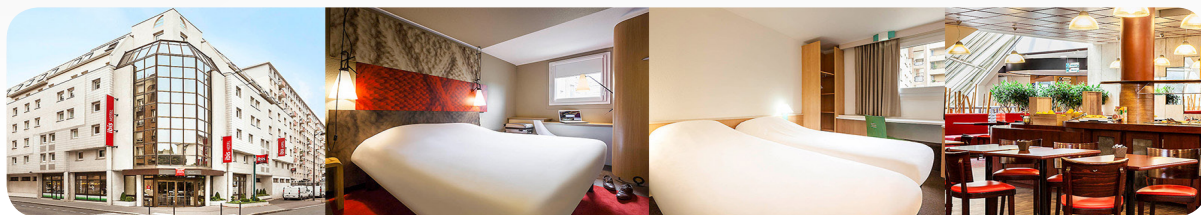
\* The catering will be organized at the Institut du Judo in the Dojo Awazu.

## IBIS STYLES PARIS-ALESIA

49 rue des Plantes 75014 Paris, France • Tel : +33 (0)1 53 90 40 00

<http://www.accorhotels.com/fr/hotel-0959-ibis-paris-alesia-montparnasse-14eme/index.shtml>

Distance from airport CDG-Roissy: 40km • Distance from Institut du Judo: 800m





# PARIS GRAND SLAM 2017 France

## CATEGORY D

Single Price full board\* (per person per night): 125€

Single Price bed and breakfast (per person per night): 85€

Twin (2 separate beds) Price full board (per person per night): 95€

Twin (2 separate beds) Price bed and breakfast (per person per night): 50€

Alone in a twin prices: the same as single prices.

\* The catering will be organized at the Institut du Judo in the Dojo Awazu.

## F1 Paris porte de Châtillon

23 avenue de la porte de Châtillon, 75014 Paris, France • Tel : +33 891705229

<http://www.hotelf1.com/fr/hotel-5010-formule-1-hotelf1-paris-porte-de-chatillon/index.shtml>

Distance from airport CDG-Roissy: 40km • Distance from sport hall: 0 km



## PACKAGE “ONLY TRAINING CAMP”

Training Judo only: 175€

Package for the whole training camp, the price for this package is fixed.

Only athletes are charged.

Warning: Hotel reservations are made on a first served basis.

The hotels capacities are limited. Rule of first come, first served is applied.

Possible reservations of extra rooms at the check-in will be surcharged with an additional 10% upon availability. NO exceptions will be made. All bank fees and bank transfer costs are to be paid by the participating federation.

Cancellation fees: up to 35 days before the arrival, full refund. From 35-20 days before the arrival 10% of the total amount will be refund. From 20-0 days before the arrival, any cancellation of rooms or no-show will result in 100% of the charge of the hotel costs that must be paid by the National Federations. Cancellations of the rooms cannot be made at the check-in. Injuries, visa problems or sickness are not valid reasons for the cancellation of rooms.

## PARTICIPATION FEES

The regulation of the European Judo Union say you should be ready to pay following rights of participation:

- European federations: 30 €/athlete
- Non-European federations: 100 €/athlete

Only athletes are charged.

11-12 February



### **BANK DETAILS**

Beneficiary's Name: F.F.J.D.A.  
Bank Name: CREDIT AGRICOLE ILE-DE-FRANCE  
Bank A/C No: FR76 1820 6004 2065 0316 3784 226  
Bank Address: 26 Quai de la Rapée, 75012 Paris  
SWIFT Code: AGRIFRPP882

### **VISA**

Visa contact: Vincent MATCZAK [vmatczak@ev3nt.fr](mailto:vmatczak@ev3nt.fr)  
Visa application: **before 6 January 2017.**

### **TRANSPORT**

Contact: Manuel KOUA • [transport@ffjudo.com](mailto:transport@ffjudo.com) • Phone: +33 7 81 38 65 46.

The journey is the responsibility of each national federation.

For arrivals and departures a transfer service is available between official hotels and:

- Roissy Charles-de-Gaulle airport
- Orly airport
- Paris Train stations

**WARNING:** transport will not be organized from/to Paris-Beauvais airport and under 3 persons. Transport will be organized when necessary between the Paris Grand Slam official hotels and the Paris Training Camp official hotels.

Transports will be organized between all the official hotels and the Institut du Judo.

Travel information must be given to the organizers (please use the [www.parisgrandslam.com](http://www.parisgrandslam.com) website) by **30 January 2017.**

### **INSURANCE**

Each delegation must be in possession of a guarantee insurance covering all its members for competitions and training:

- Civil liabilities
- Injury
- Repatriation assistance

**WELCOME TO PARIS, FRANCE!!!**

### **IJF President's Office**

HUN 1051 Budapest,  
Jozsef Attila str.1  
[www.ijf.org](http://www.ijf.org)

### **IJF General Secretariat**

Fédération Française de Judo  
21-25 Avenue de la Porte de Châtillon  
F-75 680 Paris Cedex 14 France

### **IJF Lausanne Office**

1007 Lausanne  
Avenue Frédéric-César-de-La-Harpe 49  
Switzerland  
[www.ijf.org](http://www.ijf.org)

